

Incidence of childhood cancer in Latin America and the Caribbean

60th IARC Scientific Council – 7th February 2023

[Neimar de Paula Silva](#)¹, Murielle Colombet¹, Florencia Moreno², Friederike Erdmann³, Anastasia Dolya¹, Marion Piñeros¹, Charles A Stiller⁴, Eva Steliarova-Foucher^{1*}, and the IICC-3 contributors

¹Cancer surveillance branch, International Agency for Research on Cancer (IARC/WHO), Lyon, France

²Argentinian Paediatric Oncology Registry, National Cancer Institute, Ministry of Health, Buenos Aires, Argentina

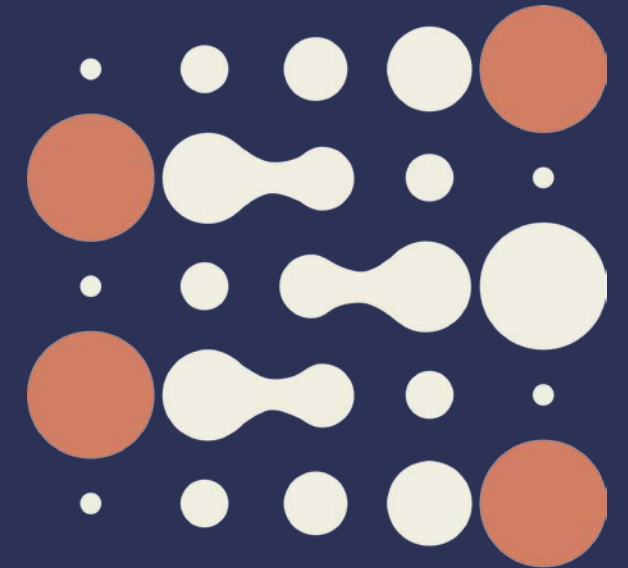
³Research Group Aetiology and Inequalities in Childhood Cancer, Division of Childhood Cancer Epidemiology, Institute of Medical Biostatistics, Epidemiology and Informatics (IMBEI), University Medical Center of the Johannes Gutenberg University Mainz

⁴National Disease Registration Service, NHS England, UK

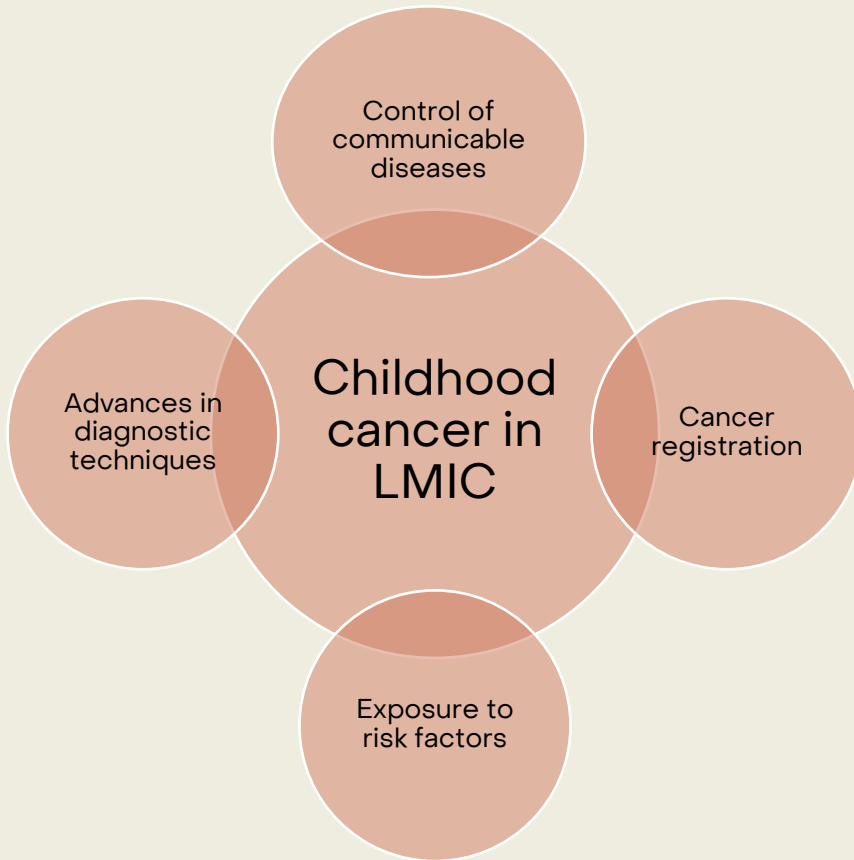
Email: depaulasilvan@iarc.who.int

Pan American Journal of Public Health, 2024

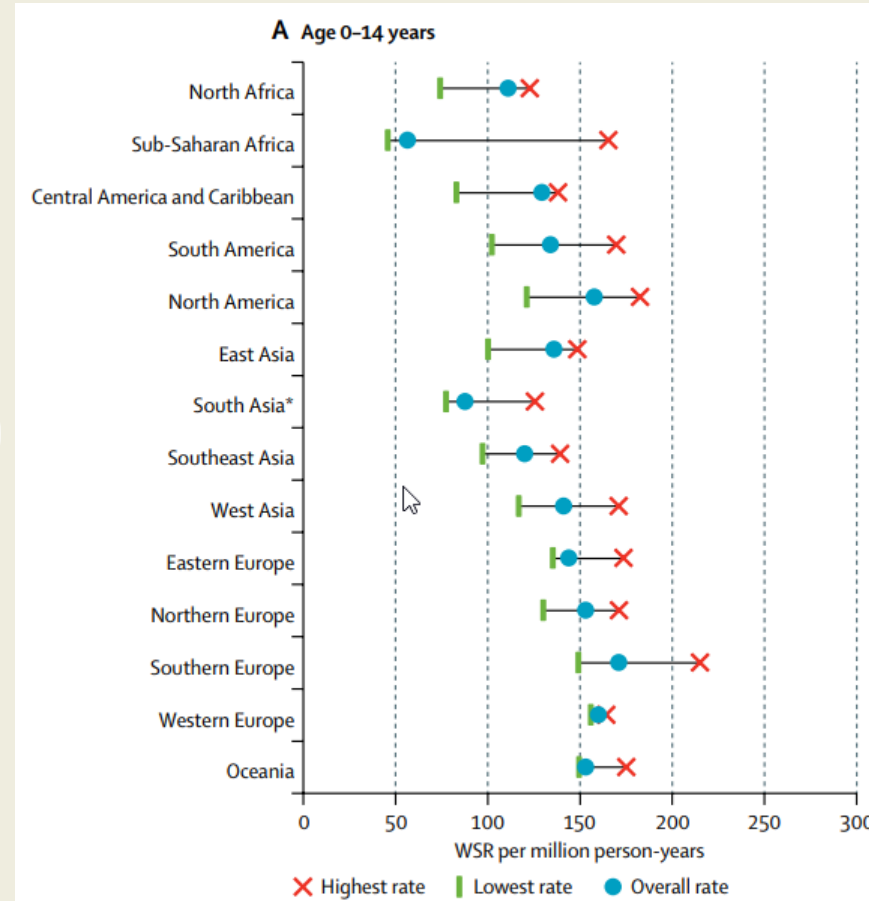
International Agency
for Research on Cancer



Childhood cancer in low- and middle-income countries



Incidence of childhood cancer 2001-2010^a



Study aims

- Geographical patterns (2001-2010)
- Time trends (1993-2012) of cancer incidence
- Evolution of childhood cancer registration in Latin America and the Caribbean

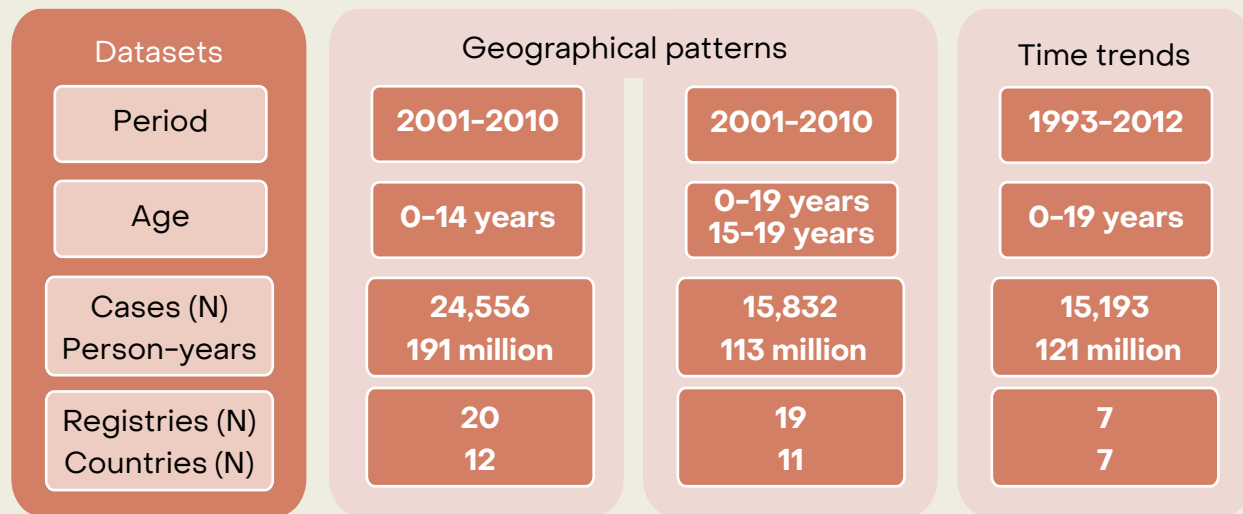
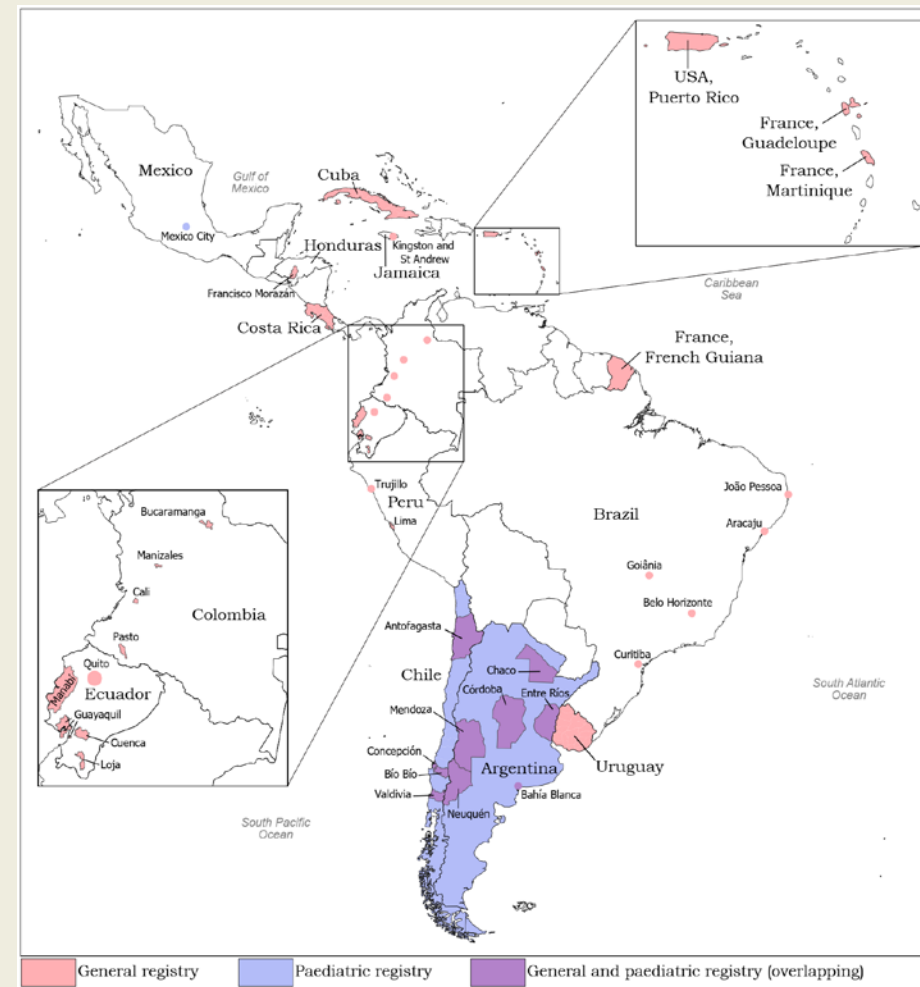
Data sources, processing, and analysis

Individual records - International Incidence of Childhood Cancer (IICC-3)^a

International Classification of Childhood Cancer (ICCC-3-2017)^b

Database quality controlled^a

Populations of Latin America and the Caribbean covered in IICC-3



Age-specific rates (ASR) age <1, 1-4, 5-9, 10-14, 15-19 years

Age-standardised rates (WSR) 0-14, 0-19 years – World standard population^c

Time trends – weighted linear regression model

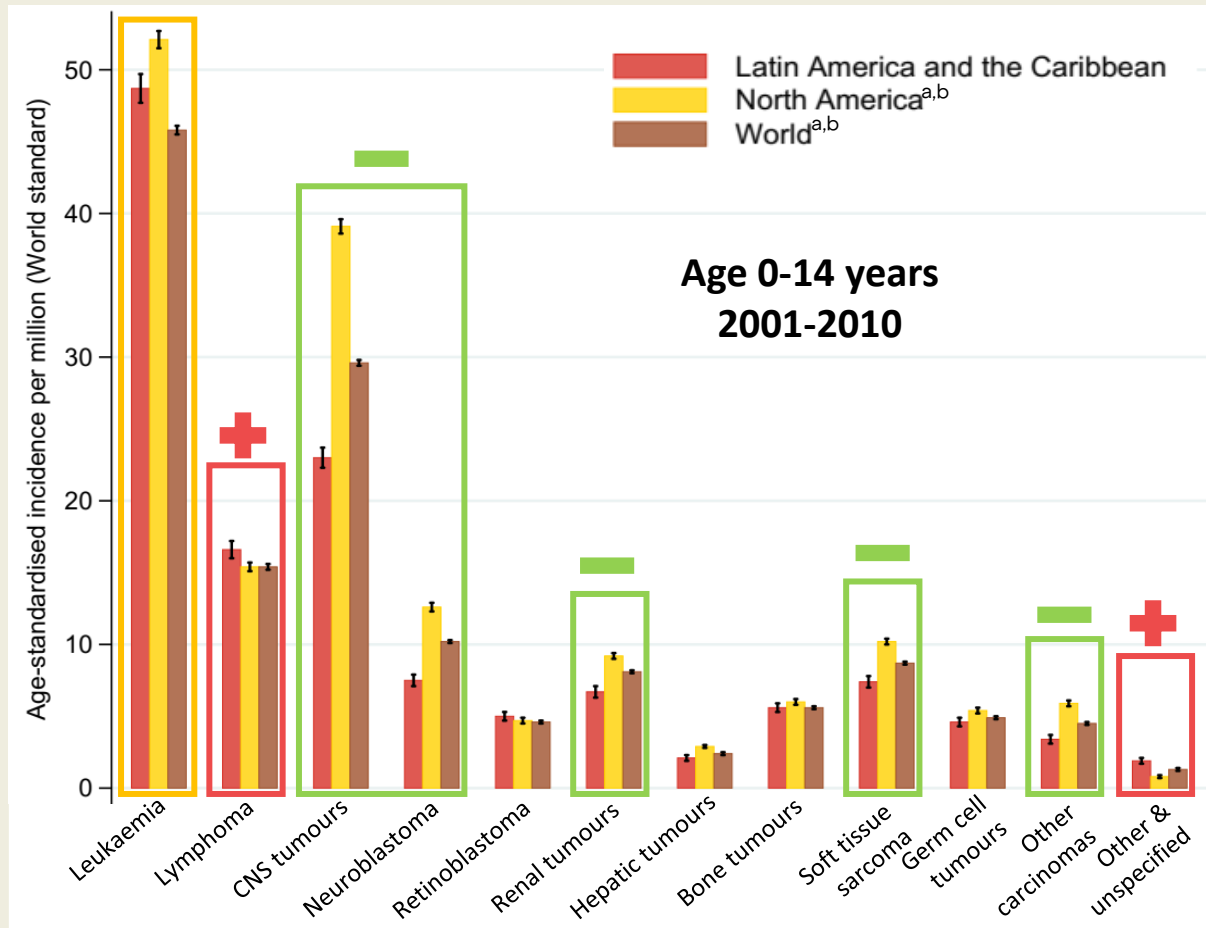
^aSteliarova-Foucher, Colombet et al. 2017

^bSteliarova-Foucher, Colombet et al. In press (iicc.iarc.who.int)

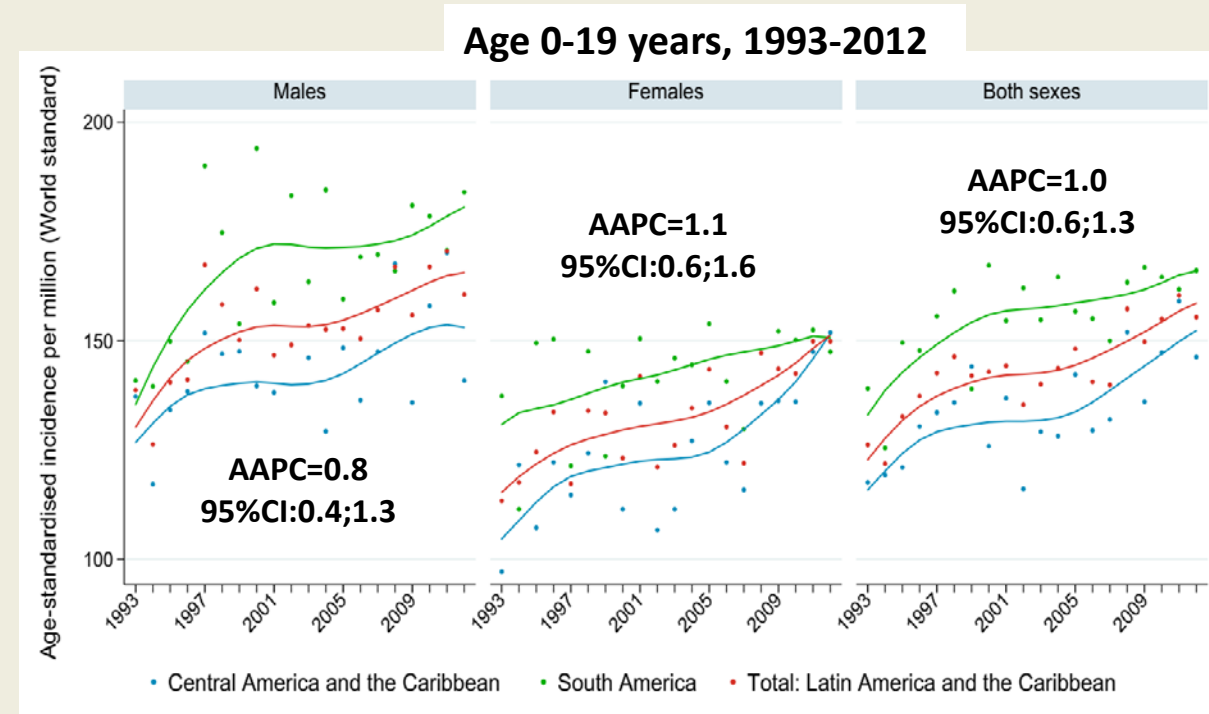
^cSegi, Fujisaku et al. 1960

Incidence rates and trends in Latin America and the Caribbean

Overall incidence rate per million person-years in Latin America and the Caribbean:

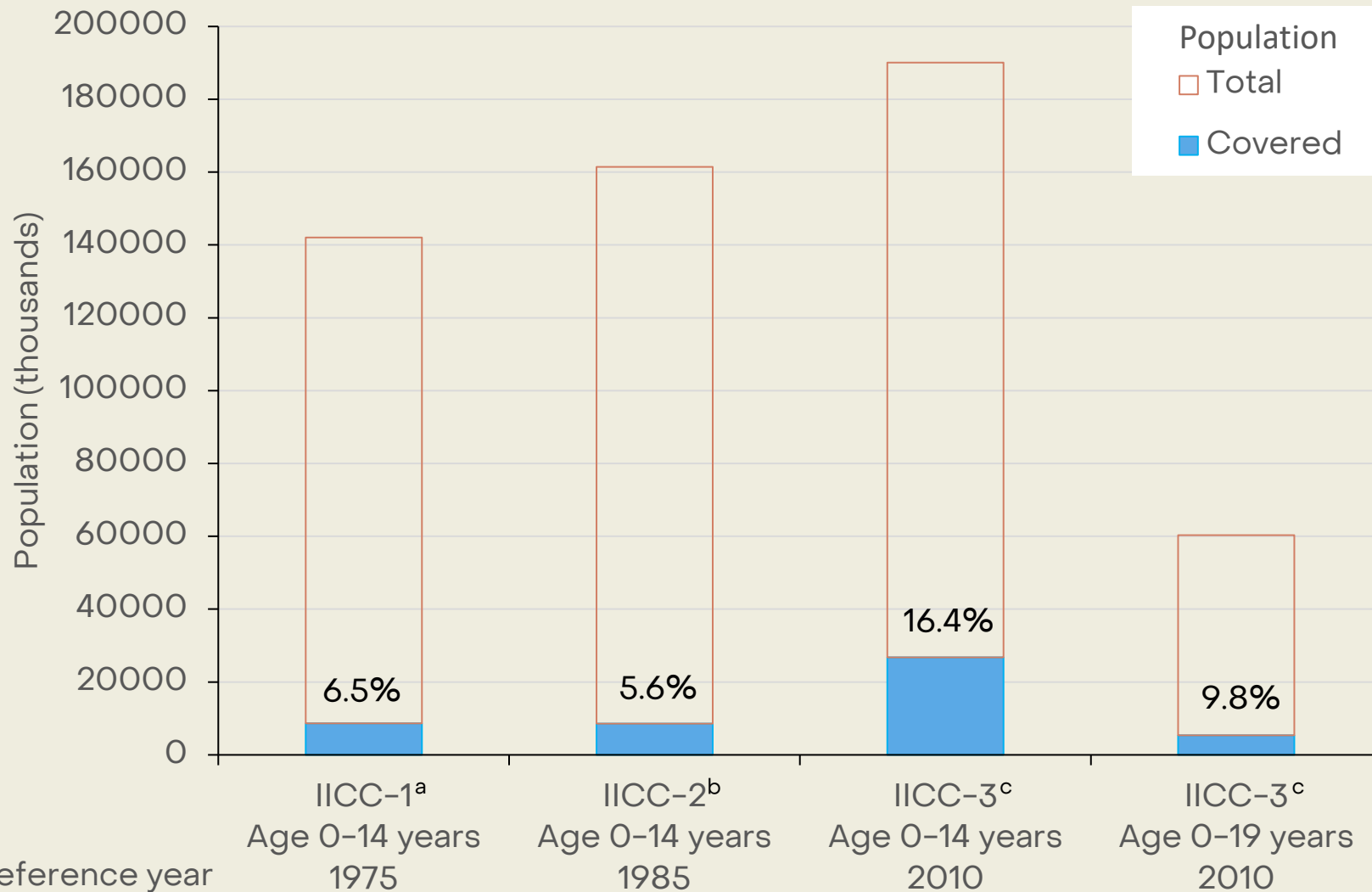


- Age range 0-14 years = 132.6
- Age range 0-19 years = 139.0
- Age group 15-19 years = 152.3



^aSteliarova-Foucher, Colombet et al. 2017
^bSteliarova-Foucher, Colombet et al. In press (iicc.iarc.who.int)
 AAPC, average annual percentage change

Coverage of childhood population in Latin America and the Caribbean by cancer registries included in IICC



Participation of registries in IICC-3:

- **91 invited**
- **54 submitted**
- **38 included**

IICC, International incidence of childhood cancer

^aParkin, Stiller et al. 1988

^bParkin, Kramarova et al. 1998

^cSteliarova-Foucher, Colombet et al. In press (iicc.iarc.who.int)

Take home message

- Incidence per million in 2001–2010: 132.6 in age 0–14 years & 152.3 in age group 15–19 years
 - Intermediate on a global scale
 - Lymphoma – highest
 - Leukaemia – intermediate
 - Most other tumour groups – lower
- Incidence over 1993–2012 increased by 1.0% per year in age 0–19 years
- Coverage of childhood population by cancer registries is inadequate
- International collaboration is the key for better understanding childhood cancer

Our action

- Call for sustained governmental support
- Building capacity in the region through the ChildGICR in collaboration with St Jude
- Support to development of childhood cancer registration in LAC
 - Mexico – ChildGICR target country for implementation



iicc.iarc.who.int

ChildGICR

Main objectives

Activities

Team

Targeting Childhood Cancer through the Global Initiative for Cancer Registry Development (ChildGICR)

St. Jude Children's Research Hospital (located in Memphis, Tennessee, USA) and IARC launched a bilateral collaborative agreement called "Targeting Childhood Cancer through the Global Initiative for Cancer Registry Development (ChildGICR)" in May 2020.

Latest news

06/12/2023

gicr.iarc.fr/child-gicr

Thank you for your attention!

International Agency
for Research on Cancer

