

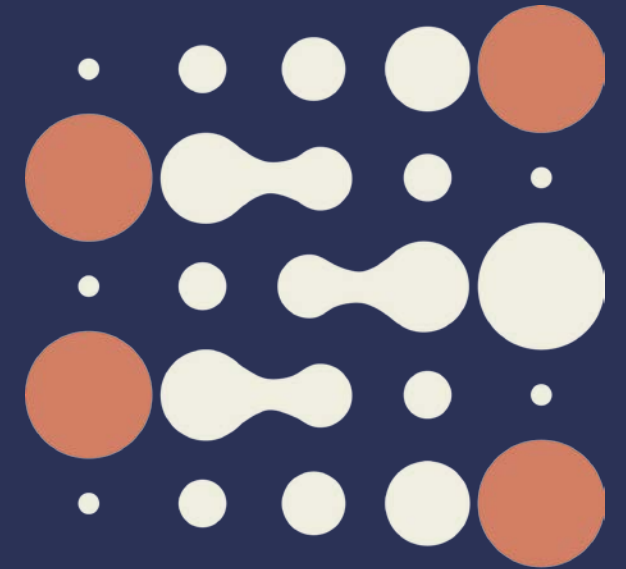
Impact of COVID-19 on Cancer services

Caboux Elodie, Villar Stéphanie, Lallemand Christophe, Kozlakidis Zisis

NME/LSB

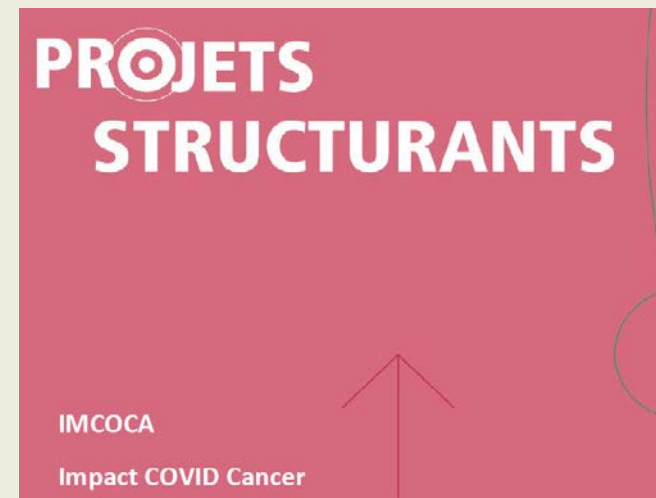
cabouxe@iarc.who.int

International Agency
for Research on Cancer



Introduction/Background/Motivation

- IMpact COvid CAncer
- Funded by CLARA within the “Projets structurants” programme (2 years)
- Collaboration with Centre Leon Berard
- To provide a broad vision of the effects of the COVID crisis on the vulnerable cancer population of its territory



Workpackages:

- WP1 (RAR2C-JCL) understand the experience of cancer patients, and more precisely to study the consequences of the epidemic and the measures implemented on people's adaptation strategies at different levels (professional, social, marital and family)
- ➔ **• WP2 (ARCOVID) aims to capture the effects of the COVID crisis on the organization of a patient care and research center.**
- WP3 (COLLAT-COVID) aims to quantify the effect of the pandemic on management of pathologies other than COVID.



Objective and methodology:

Collect feedback from healthcare providers and researchers on:

- the adaptability of guidelines and recommendations published during the crisis COVID-19
- the dependance of adaptability on the local context

WP 2– ARCOVID

- Describe the changes and local measures put in place in response to the COVID 19 crisis to guarantee the continuity of care and research as part of the fight against cancer according to local contexts
- Collect the opinions and experiences of caregivers, researchers or teacher-researchers in the fight against cancer on the usefulness and adequacy of the guidelines and recommendations published by local authorities, WHO and other scientific societies during the COVID-19 crisis according to local contexts
- Propose guidelines and training material for managers, service providers care, researchers, university professors, in order to better manage and be better prepared for a future health crisis

Results

Highlights:

- Guidelines established recommendations on triage, cancer care organisation, and recommendations for specific age groups and by speciality.
- Guidelines were not followed due to epistemological and ethical issues, including the lack of sufficient evidence, inadaptation to local resources, and different interpretations across the healthcare spectrum
- Early evidence on impact shows delays in diagnostic procedures as well as some early evidence on disease progression.



Discussion and Conclusions

Impacts:

- wider healthcare response evaluation for Covid-19
- development/adjustment of relevant future national guidelines for improvement of cancer care regionally and within France.
- basis of state-of-the-art educational material

Next:

- Extension of the study to biobanks in France and in LMICs

Related publications/References/Literature cited

Bogaert, Brenda, et al. "Organisation of cancer care in troubling times: a scoping review of expert guidelines and their implementation during the COVID-19 pandemic." *Critical Reviews in Oncology/Hematology* (2022): 103656.

Acknowledgements

CLARA, Centre Leon Berard, Bogaert Brenda, Saintigny Pierre

Key take-home messages

The COVID-19 pandemic has had a multitude of effects on healthcare provision. Focusing on cancer care in France, there has been extensive work in collaboration with local partners to highlight both the challenges that have been encountered, as well as the positive innovations that have resulted.