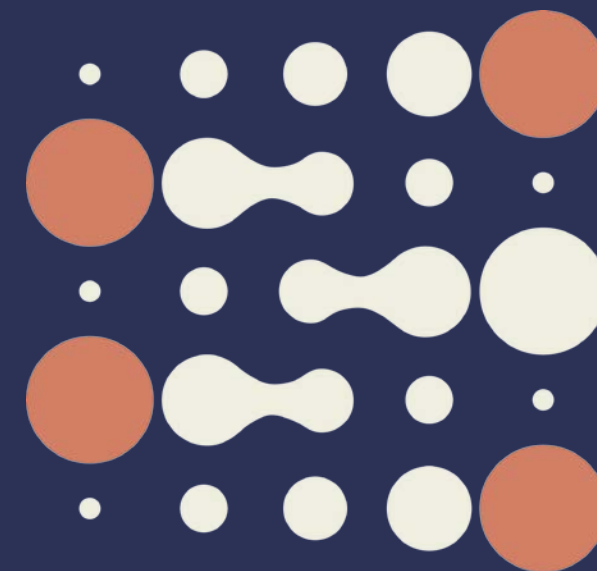


Scientific Council recommendations following flash-talks session

Scientific Council, 61st Session (remote)
February 12-14, 2025

International Agency
for Research on Cancer



Design of the Flash talk sessions

- Held on 3-4 December 2024 (by web conference)
- Flash talk presentation from 7 Branches: CSU, NME, LSB, GEM, ENV, ESC, LCB (EPR and EGM being under quinquennial Review in 2025)
- 3 Scientific Council members assigned for each Branch
- Overview from the Branch Head: studies in the context of the IARC Medium-Term Strategy (MTS) 2021-2025
- Up to 5 flash talks by Branch
- Each scientific review and recommendations shared with each Branch

REPARTITION BY BRANCH

Branch (all posters)	Name of SC members
EGM (Review)	Walter Berger; David Gisselsson Nord, Orla Sheils
EPR (Review)	Satish Gopal, Sirpa Heinävaara, Young-Woo Kim
CSU	Valery Lemmens; Adam Grant Elshaug; Richard Sullivan
GEM	Luis Felipe Ribeiro Pinto; André Karch; Tatsuhiro Shibata
NME	Mathilde Touvier; María José Sánchez Pérez; Ali Saeed Al-Zahrani
ENV	Marie-Elise Parent; Ben Spycher; Hesham Elghazaly
ESC	Pål Romundstad; Valeriy V. Breder; Roberta De Angelis
LCB	Mohamed Berraho; Eric Van Cutsem (<i>unable to attend</i>); Prashant Mathur
LSB	Jie He; Einas Abdulaziz Eid Al Kuwari; István Kenessey

Overall review

- Excellent overviews of the scientific activities and structure of the Branches
- Excellent to outstanding presentations from scientific staff
- High scientific quality of studies
- High public health impact
- Innovative work/pioneering projects
- Alignment with the IARC Medium-Term Strategy very high
- Strong collaboration with international partners and key stakeholders
- Diversity of backgrounds highly appreciated
- Gender balance

Cancer Surveillance (CSU)

Criteria	Comments
1. Quality of presentation	
1.1 Scientific background	Diversity of backgrounds highly appreciated
1.2 Presentation of results	Excellent to outstanding presentations from scientific staff/high scientific quality
1.3 Discussion and conclusion	Suggestion made by SC to consider worth of examining financial access barriers to care Highly collegial and supportive team atmosphere apparent
1.4 Quality and originality of slides	
2. Alignment with the IARC MTS (2021–2025) and benefit for IARC	Alignment with MTS very high
3. Potential impact of the research proposal on the unmet needs in cancer control	Excellent considerations by scientific staff of policy reach, impact and potential for further advancing policy uptake of CSU outputs. Recognition that there is further scope for the creation of feedback loops with policy end users to understand the utility of CSU ‘products’ or outputs, and what can be learned from any differential uptake/utilisation across participating states/partners. Outstanding focus on health inequalities, with multiple very high quality projects The 2022 Review of CSU pointed to the need for more ‘health economic’ considerations in their work. This aspect has not developed as substantively (as health inequalities have) however some burgeoning and promising work in descriptive economics, e.g. productivity loss and informal caregiving economic burdens.
4. International collaboration	
5. General comments/Overview by Branch Heads: quality and clarity of presentation	Excellent overview, with clear discussion on how CSU (and IARC) have responded to the last branch review conducted in January 2022.

Genetic Epidemiology (GEM)

Criteria	Comments
1. Quality of presentation	Clear and high quality of the flash talks of the scientists. Slides perfectly arranged, and pre-recorded presentations were on point. The choice of the presenters showed diversity of the branch and recognition of parity in their working environment.
1.1 Scientific background	Quality of the work builds on the long-term aims and research lines of the branch.
1.2 Presentation of results	The way the projects are set up with a clear translational perspective underscores the great leadership in the branch and will secure that public health impact can be reached.
1.3 Discussion and conclusion	The panel has no additional recommendations for the branch.
1.4 Quality and originality of slides	The quality of the work was exceptionally high throughout the diverse research projects presented.
2. Alignment with the IARC MTS (2021–2025) and benefit for IARC	They align very well with the IARC Medium-Term strategy, and the overall aims of IARC.
3. Potential impact of the research proposal on the unmet needs in cancer control	The potential public health impact of the work is enormous.
4. International collaboration	All presented projects are performed in major international collaborations (often led by IARC), showing the high visibility and the vast network of the branch.
5. General comments/Overview by Branch Heads: quality and clarity of presentation	The presentation was clear and of high quality gave a very good impression about the activities and the structure of the branch.

Nutrition and Metabolism (NME)

Criteria	Comments
1. Quality of presentation	
1.1 Scientific background	Ranged between excellent to outstanding.
1.2 Presentation of results	Clear, supported by statistics and graphs, innovative approach such as federated analysis.
1.3 Discussion and conclusion	Straightforward with justified suggestions for future implementation and/or further in-depth investigation.
1.4 Quality and originality of slides	Ranged between excellent to outstanding. SC members congratulate young scientists for their work and the quality of the presentations.
2. Alignment with the IARC MTS (2021–2025) and benefit for IARC	Perfectly aligned with IARC MTS and with the NME branch objectives.
3. Potential impact of the research proposal on the unmet needs in cancer control	High impact on public health with perspectives in terms of recommendations to the public (e.g. on food biodiversity, on physical activity), prevention, screening or treatment strategies (e.g. thyroid hormones and ovarian cancer prognosis; metabolomic signature for gallstones and/or gallbladder cancer, etc.).
4. International collaboration	Excellent, specially in utilizing pan-European EPIC databases and creating partnership with researchers from different countries. The specific methodological work on federated analysis hold great promises to foster future international collaborations and open science.
5. General comments/Overview by Branch Heads: quality and clarity of presentation	Perfect overview by branch head with proper introduction to topics and early-career presenters, as well as the different senior scientists of the branch who coordinated their work.

Laboratory Support, Biobank and Services (LSB)

Criteria	Comments
1. Quality of presentation	High-quality of presentations.
1.1 Scientific background	
1.2 Presentation of results	All the presentations were clearly informative. Video format homogenous. The presenters, including the head of the branch, were prepared and answered to the arisen questions properly.
1.3 Discussion and conclusion	The operation of IARC Biobank is able to fulfill its mission, reports confirmed its progressive development. The move to the other building resulted in technological upgrades, improved security and capacity. The next planned goal is to obtain the ISO20387 biobanking accreditation.
1.4 Quality and originality of slides	High quality and homogeneity in video format.
2. Alignment with the IARC MTS (2021–2025) and benefit for IARC	Perfectly aligned with IARC MTS The Branch is contributing to almost all other IARC Branches.
3. Potential impact of the research proposal on the unmet needs in cancer control	LSB collects biological samples and data, supporting interdisciplinary research and synthesizing information for global guidelines production. The branch also builds local capacity for research infrastructure in low- and middle-income countries (LMCs).
4. International collaboration	Significant role in international research collaboration (engagement with 37 countries, shipment over 40 000 samples). The branch is performing numerous international collaborations with other partners including LMCs.
5. General comments/Overview by Branch Heads: quality and clarity of presentation	Excellent overview by branch head. All presentations were very clear.

Environment and Lifestyle Epidemiology (ENV)

Criteria	Comments
1. Quality of presentation	
1.1 Scientific background	we encourage the Branch to continue to ensure that, during project prioritization, long-term commitments do not constrain the ability to address emerging unmet needs.
1.2 Presentation of results	excellent quality and diversity of the presented research, which includes both innovative work in longstanding IARC focus areas (e.g., Codes Against Cancer, radiation, smoking) and pioneering new projects (e.g., Albinism, Tattooing).
1.3 Discussion and conclusion	The selection reflects the Branch's ability to identify and address emerging unmet needs effectively. For instance, the CRABAT cohort exemplifies innovative use of existing national cohorts in France and Germany to investigate cancer risks related to tattooing.
1.4 Quality and originality of slides	Slides were original and of high quality
2. Alignment with the IARC MTS (2021–2025) and benefit for IARC	The projects align well with the IARC MTS 2021–2025 and leverage IARC's unique role as an independent authority with strong convening power and capacity-building capabilities in LMICs.
3. Potential impact of the research proposal on the unmet needs in cancer control	All the presented projects have high potential impact on cancer control
4. International collaboration	The presented projects demonstrate a high degree on international collaboration
5. General comments/Overview by Branch Heads: quality and clarity of presentation	<p>We particularly commend the Branch's efforts in three key areas:</p> <ul style="list-style-type: none"> • Advancing research and prevention in challenging areas involving longstanding carcinogens, such as risks from low-dose radiation and targeted smoking cessation initiatives. • Building effective local partnerships with research institutions, registries, and NGOs, as demonstrated by projects on nuclear test fallout exposure in Kazakhstan and cancer in individuals with albinism. • Maintaining rigorous methodological standards, whether in dose assessment for radiation studies or in formulating evidence-based prevention recommendations.

Evidence Synthesis Classification (ESC)

Criteria	Comments
1. Quality of presentation	
1.1 Scientific background	
1.2 Presentation of results	Relevant selection and high quality of presentations (accurate background information, full control of the domain of interest)
1.3 Discussion and conclusion	Attention to equity perspective (implementation in LMIC)
1.4 Quality and originality of slides	Innovative and more powerful ways to analyse increasing evidence
2. Alignment with the IARC MTS (2021–2025) and benefit for IARC	Full alignment with IARC MTS 2021-2025; all presented activities close to the core and unique mission of IARC (Monographs, Handbooks, WCT)
3. Potential impact of the research proposal on the unmet needs in cancer control	High impact on cancer control (prevention and treatment)
4. International collaboration	Good international collaboration with key stakeholders
5. General comments/Overview by Branch Heads: quality and clarity of presentation	

Learning and Capacity Building (LCB)

Criteria	Comments
1. Quality of presentation	Excellent
1.2 Presentation of results	<p>The successful collaborations built by the trainees and fellows was remarkable and more of such successful partnerships should be brought forward.</p> <p>It was appreciated that the Branch was able to maintain stipend levels over the years at competitive rates so as to attract good talent.</p>
1.3 Discussion and conclusion	<p>Suggestions:</p> <ol style="list-style-type: none"> 1. An Alumini program of the LCB branch be developed to allow ongoing collaborations and partnerships. Some of the Alumini could be invited to the IARC 60 years celebrations in 2025-2026. 2. LCB Branch could consider publishing newsletter covering its programs, achievements and impact and share it across the world using digital and internet-based methods. 3. An assessment of the quantum of use of resource material developed by the LCB branch be documented and reviewed periodically. 4. More regional LCB hubs should be opened in order to increase its outreach 5. The Members wished to understand the engagement of the WHO Academy opened in Lyon and its impact on the LCB branch. Efforts to retain the uniqueness of this IARC branch must be maintained. 6. It was recommended that more human and financial resources be made available to the LCB branch to strengthen their work.
5. General comments/Overview by Branch Heads: quality and clarity of presentation	<p>All Members appreciated the work presented by the LCB branch and lauded the efforts made with limited human resources available.</p> <p>It was noted that the work of LCB branch was unique amongst all other branches at IARC.</p>

Thank you

International Agency
for Research on Cancer

